



*Kometa 3Di PACS*

HL7 Conformance Statement

## **Kometa 3Di PACS**

HL7 Conformance Statement

Product Version: 1.0

Last Save Date: 5 April 2018

Kometa 3Di PACS

Prospect Vernadskogo 92, office 231, Moscow, Russian Federation, 119571, phone: +7 (495)  
215-18-29, fax: +7 (495) 215-18-29



**Kometa 3Di PACS**

HL7 Conformance Statement

### *Statement of HL7 Conformance*

We Kometa 3Di PASC, hereby state that the inputs and outputs of the 3Di are HL7 V 3.0 compatible and designed to receive and transfer HL7 3.0 compatible data.



**Date:**  
**05/04/2018**

**Kometa 3Di PACS**

**Table of Contents**

**KOMETA 3DI PACS ..... 1**

    HL7 CONFORMANCE STATEMENT .....1

    PRODUCT VERSION: 1.0     1

    LAST SAVE DATE: 05 April 2018 .....1

    DATE: 2

**TABLE OF CONTENTS ..... 3**

**1. INTRODUCTION ..... 3**

    1.1 OVERVIEW           3

    REVISION HISTORY       4

    1.2 AUDIENCE           4

    1.3 REMARKS            4

    1.4 DEFINITIONS, TERMS AND ABBREVIATIONS .....4

    1.5 REFERENCES         5

**• NETWORKING ..... 6**

    2.1 HL7 SPECIFICATIONS 6

        2.1.1 *Accepted HL7 messages* 6

    2.2 CONFIGURATION     7

    2.3 DATA DICTIONARY OF PRIVATE ATTRIBUTES .....7

    2.4 PRIVATE TRANSFER SYNTAXES.....7

**1. Introduction**

**1.1 Overview**

Kometa's 3Di PACS allows to communicate over HL7 protocol version 2.5. HL7 message is sent to predefine target machine (RIS/HIS) in order to update patient's study information.

**Kometa 3Di PACS**

**Revision History**

| Revision | Writer       | Date             | Comment     | Reviewed by |
|----------|--------------|------------------|-------------|-------------|
| 1.0      | David Soffer | 13 December 2011 | First issue |             |

**1.2 Audience**

This document is intended for hospital technical health system integrators. It is assumed that the reader has a working understanding of DICOM and HL7 protocols.

**1.3 Remarks**

There are no special remarks.

**1.4 Definitions, Terms and Abbreviations**

Definitions, terms and abbreviations used in this document are defined within the different parts of the HL7 and DICOM standards. Abbreviations and terms are as follows:

- AE      DICOM Application Entity
- AET     Application Entity Title
- ASCE   Association Control Service Element
- AE      DICOM Application Entity
- AET     Application Entity Title
- ASCE   Association Control Service Element
- DIT     Directory Information Tree (LDAP)
- DN      Distinguished Name (LDAP)
- CD-R    Compact Disk Recordable
- CSE     Customer Service Engineer
- FSC     File-Set Creator
- FSU     File-Set Updater
- FSR     File-Set Reader
- GSDF   Grayscale Standard Display Function
- GSPS   Grayscale Softcopy Presentation State
- IOD     (DICOM) Information Object Definition
- ISO     International Standard Organization
- LDAP    Lightweight Directory Access Protocol
- LDIF    LDAP Data Interchange Format
- MPPS   Modality Performed Procedure Step
- MSPS   Modality Scheduled Procedure Step



## H17 Conformance Statement

### *Kometa 3Di PACS*

|     |   |
|-----|---|
| R   | Required Key Attribute                      |
| O   | Optional Key Attribute                      |
| PDU | DICOM Protocol Data Unit                    |
| RDN | Relative Distinguished Name (LDAP)          |
| SCU | DICOM Service Class User (DICOM client)     |
| SCP | DICOM Service Class Provider (DICOM server) |
| SOP | DICOM Service-Object Pair                   |
| U   | Unique Key Attribute                        |

---



*Kometa 3Di PACS*

**1.5 References**

- Kometa DICOM Conformance Statement
- HL7 Standards document from “Health Level Seven International”

***Kometa 3Di PACS***

- **Networking**

HL7 communication is performed over TCP/IP protocol. The communication allows Transport Security Layers.

Accepted encryption protocols:

- Plain Minimal Lower Level Protocol; no TLS
- TLS connections; offer AES or DES encryption
- TLS connections; force AES or DES encryption
- TLS connections; force DES encryption
- TLS connections without encryption

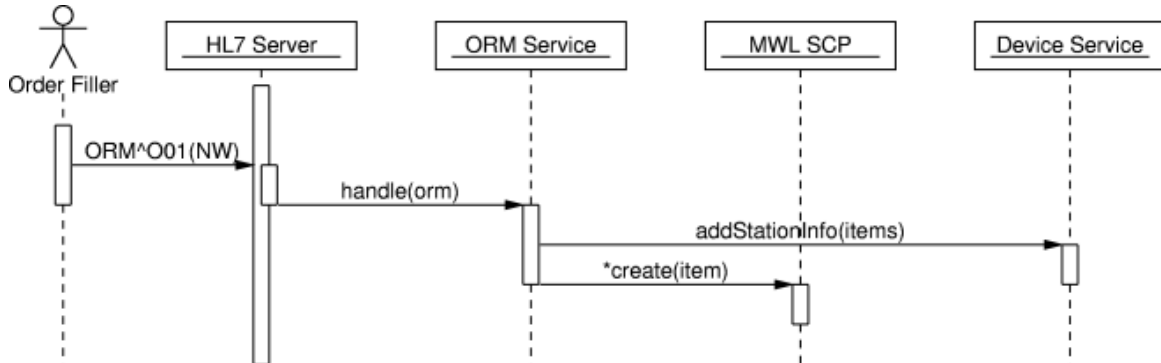
## ***2.1 HL7 Specifications***

### **2.1.1 Accepted HL7 messages**

- ADT^A02 (Patient Transfer) message receive
- ADT^A03 (Patient Discharge) message receive
- ADT^A06 (Change an Outpatient to an Inpatient) message receive
- ADT^A07 (Change an Inpatient to an Outpatient) message receive
- ADT^A08 (Update Patient Information) message receive
- ADT^A40 (Merge Patient Internal ID) message receive
- ADT^A12 (Cancel Patient Transfer) message receive
- ADT^A13 (Cancel Patient Discharge) message receive
- ORM (Procedure Scheduled) message receive
- ORM (Procedure Updated) message receive
- ORU^R01 (Unsolicited Transmission of Observation)

**Kometa 3Di PACS**

**2.1.1.1 Procedure Schedule diagram**



**2.2 Configuration**

The configuration of the system is done using the Management Console and 3Di PACS XML configuration files. All configurations are stored in the configuration files.

**2.3 Data Dictionary of Private Attributes**

N/A

**2.4 Private Transfer Syntaxes**

N/A